

PILOT-OPERATED CHECK VALVE (HK3)



Features

This type of valve usually functions as a normal check valve that allows fluid flow only in one direction by maintaining the specified cracking pressure and completely stops fluid flow in the reverse direction. However, it also enables fluid flow in the reverse direction on application of external pilot pressure.

- The pilot pressure has to be at least 40% of the OUT port pressure. The pilot-pressure needed for decompression is, however, 10% of the OUT port pressure or greater.
- If subplate SHQ**-*T*(A) is necessary, please order one separately.
- For gasket-connection type check valves, finish the mounting faces to the same quality as the valve faces (3.2 μmRz).

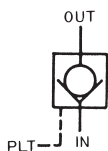
Description of the model designation

HK3-YG2E (D) -03 (A)

- W: Decompression
- Y: Pilot-operated type
- Piping method
- T: Thread type
- F: Flange type
- G: Gasket type
- Cracking pressure
 - 1: 0.04 MPa
 - 2: 0.35 MPa
 - 3: 0.46 MPa
 - 4: 0.53 MPa
- Model No.
- Nominal size
- Drain
 - No code: Internal drain
 - D: External drain
- Pilot
 - E: External pilot

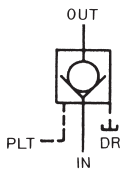
⚠ Cautions on use Please read the Operating Manual carefully to ensure correct usage.

Internal drain Type



Nominal Size	Rated Flow (L/min)	Max. Operating Pressure (MPa)	Model		
			Thread-connection Type	Gasket-connection Type	Flange-connection Type
02	12	21	—	HK3-YG*E-02B	—
03	40		HK3-YT*E-03A	HK3-*G*E-03A	—
04	75		—	—	HK3-*F*E-04A
06	120		HK3-*T*E-06A	HK3-*G*E-06A	HK3-*F*E-06A

External drain Type



Nominal Size	Rated Flow (L/min)	Max. Operating Pressure (MPa)	Model		
			Thread-connection Type	Gasket-connection Type	Flange-connection Type
02	12	21	—	HK3-YG*ED-02B	—
03	40		HK3-YT*ED-03A	HK3-*G*ED-03A	—
04	75		—	—	HK3-*F*ED-04A
06	120		HK3-*T*ED-06A	HK3-*G*ED-06A	HK3-*F*ED-06A

Outside dimensions

HK3-YG*E (D) -02B

HK3-*T*E (D) -A**

● For the sub-plate SHQ02-02T1, refer to page B-22. Mass: 1.2kg

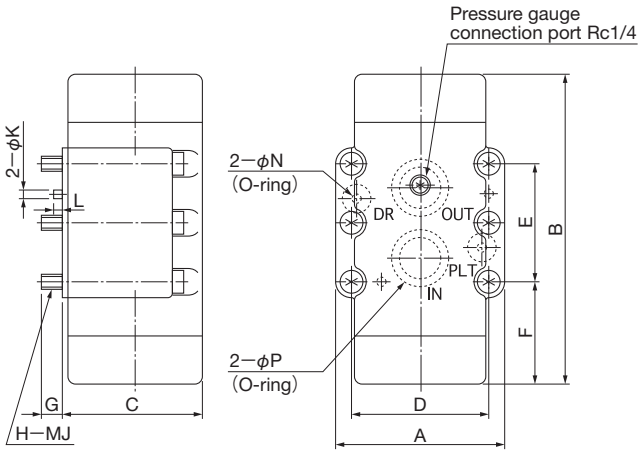
Unit: mm

Model	A	B	C	D	E	F	G	H	J	Mass (kg)
HK3-*T*E (D) -03A	66	96	140	84	69	50	13	66	3/8	4
HK3-*T*E (D) -06A	72	108	165	101	79	60	14	72	3/4	5.5

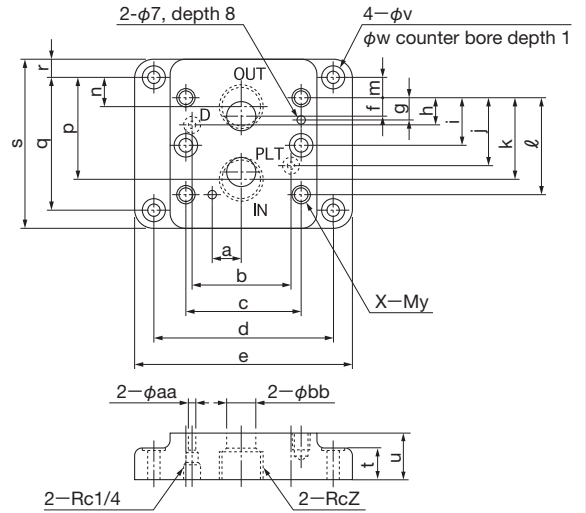


Outside dimensions

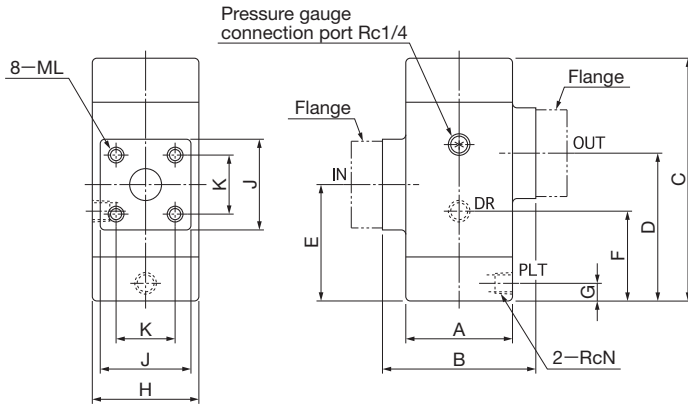
HK3-*G*(D)-**A



SHQ**-*T1 (A)



HK3-*F*(D)-**A



NOTE: DR is necessary only for external drain type (HK3-Y**ED-**A).
For sub-plate SHQ**-*T3, refer to page L-5.

Unit: mm

Model	A	B	C	D	E	F	G	H	J	K	L	N	M	Mass (kg)
HK3-*G*(D)-03A	88	117	65	66.7	42.9	40	15	4	10	6	6	JIS B 2401-1AP11	JIS B 2401-1AP21	4
HK3-*G*(D)-06A	102	165	75	79.4	60.3	56	15	4	10	6	6	JIS B 2401-1AP16	JIS B 2401-1AG30	7

Model	a	b	c	d	e	f	g	h	i	j	k	l	m	n	p	q	r	s	t	u	v	w	x	y	z	aa	bb
SHQ03-03T1	19	51	67	106.4	130	7	11	21.5	-	21.5	36	43	0	5	38	43	11	65	11	25	11	17.5	4	10	3/8	5	14.5
SHQ03-04T1	19	51	67	106.4	130	7	11	21.5	-	21.5	36	43	4.5	7	45	52	11	74	11	30	11	17.5	4	10	1/2	5	14.5
SHQ06-06T1	24	68	80	124	146	11	16	21	-	39	49	60	0	6	54	60	18	96	11	35	11	17.5	4	10	3/4	6	19
SHQ06-08T1	24	68	80	124	146	11	16	21	-	39	49	60	6	7	65	72	18	108	11	43	11	17.5	4	10	1	5	19

Model	A	B	C	D	E	F	G	H	J	K	L	N	Used Flange	Mass (kg)
HK3-*F*(D)-04A	66	90	140	84	69	50	13	66	56	36	10	1/4	JIS B 2291-SSA15	4.5
HK3-*F*(D)-06A	72	102	165	101	79	60	13	72	60	40	10	1/4	JIS B 2291-SSA20	6